



“A journey of

a thousand miles

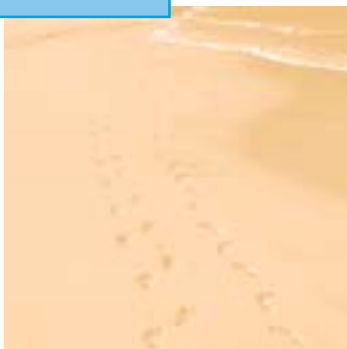
begins with a
single step”

- Confucious

Take the first step...

Explore
NUMMI's Career
Development
Program.

Start the jour-
ney of the rest
of your life.

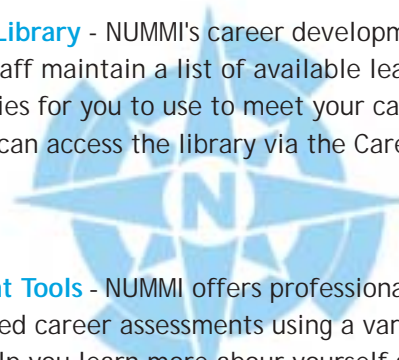


A Few of NUMMI's Career Development Program Resources

Career-Dev - Accessed via NUMMI's intranet, Career-Dev is NUMMI's virtual career center. This essential resource contains all the information you need to participate in the program.

Resource Library - NUMMI's career development program staff maintain a list of available learning opportunities for you to use to meet your career goals. You can access the library via the Career-Dev Web site.

Assessment Tools - NUMMI offers professionally-administered career assessments using a variety of tools to help you learn more about yourself and your career preferences. Learn more about these tools via the Career-Dev web site.



For further information on NUMMI's career
development program, contact:

Erin Hutchinson

Extension 4617

EHutchinson@nummi.com

Where Do You Want to Grow
T o d a y ?



N U M M I ' s
Career Development
P r o g r a m

Welcome to NUMMI's Career Development Program

Where can I go?

What can I do?

Where do I fit in at NUMMI?

What will my future look like?

Hey, what's a career at NUMMI
anyway?

These are common questions for anyone considering their career. NUMMI has developed a program to answer such questions and help you create a plan for yourself and your career while at NUMMI.

NUMMI's Career Development Program will give you the tools, resources, and support you need to investigate your career interests, develop an individualized career plan, and take steps to grow yourself to meet your career goals.

So... Where Do You Want to
Grow Today?

The Career Development Process

1. Investigate

If you decide to participate in the program, the first thing you'll do is spend some time **INVESTIGATING** your interests and attitudes relating to your career.

The purpose of this step is to create a base of understanding about yourself and your career aspirations so that you can take action to grow yourself at NUMMI.

Your supervisor and program staff will be available to help you during this step and throughout the whole process.

2. Plan

Once you feel like you have a good sense of yourself and what career aspirations you have, you'll start to actually develop your **PLAN**.

Your written Career Development Plan (CDP) will serve as your guide to your evolving career and a record of your development at NUMMI. The CDP contains information on the developmental goals you and your supervisor have agreed upon.

You will track your progress on your CDP and are always free to make changes whenever you wish.

3. Implement

The next step in your journey requires you to **IMPLEMENT** your plans. You will work with your supervisor and program staff to select and carry out activities that will help you meet the goals outlined in your plan.

NUMMI's career development program has a wealth of resources for you to draw upon when taking action to meet your goals.

Look to the back of this brochure for more information on these resources.

4. Maintain

Throughout this process you will take time to reflect back on your progress and assess where you are in your journey.

We call this the **MAINTENANCE** phase because you will be taking the time to assess your progress in order to make sure you're maintaining your career growth in a way that's best for both you and NUMMI.